

THE STATE OF DELAWARE



STATE HIGHWAY DEPARTMENT

CONSTRUCTION PLAN FOR:

CONTRACT NUMBER **67-08-008**

FEDERAL AID PROJECT NUMBER **F-196(3)**

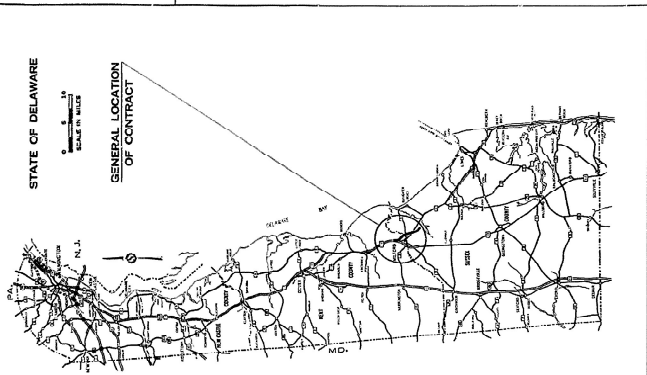
DESIGN DESIGNATION

FEDERAL CHARTS	F.A.P.
ACT. (1957)	12,000
DESIGN SPEED	3,000
MIN. STOPPING SIGHT DISTANCE	70
MAX. SE.	600 FT
MAX. DEGREE OF CURVE	0.068 FT/LE
MAX. % GRADE	2'-26"
	2.92%

STATE OF DELAWARE

SCALE IN MILES

GENERAL LOCATION OF CONTRACT

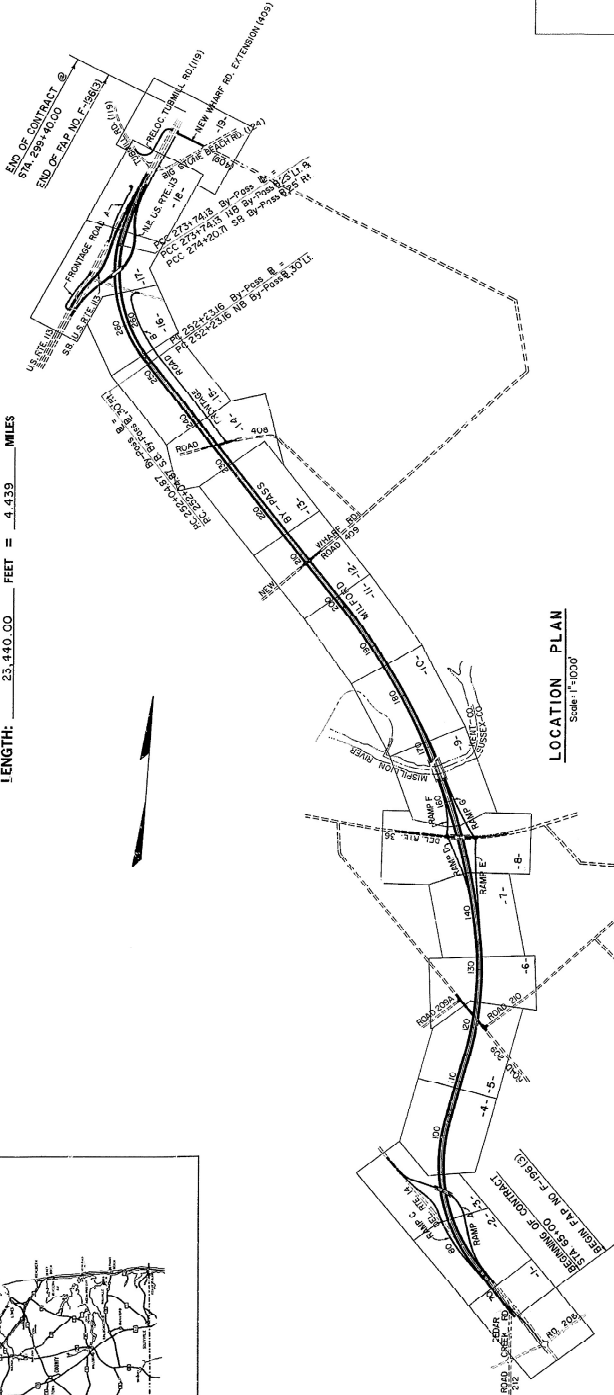


BEGIN PROJECT: STATION NO. 65+00.00 END: STATION NO. 235+40.00

LENGTH: 23,440.00 FEET = 4.439 MILES

LOCATION PLAN

Scale 1"=1000'



CONTRACT	COUNTY	STATE	PROJECT NO.	PROJECT NAME	VEH. NUMBER
67-08-008	SUSSEX	DELA.	2	F-196(3)	1

MILFORD BY-PASS

SURVEY BOOKS
NUMBERS **4557 - 4566**

SHEET NO.	TITLE SHEET & LOCATION PLAN
1	TITLE SHEET & LOCATION PLAN
2-5	TYPICAL SECTIONS
7-17	DETAILED SHEETS
18-19	MAINTENANCE OF TRAFFIC & SEQUENCE OF CONSTRUCTION
20-38	P.A.N.S.
39-45	GRADING PLANS & DETOUR LAYOUTS
46-65	PROFILES
70-130	BRIDGE PLANS
131	SIGNING PLANS
132	CONTRACTS
145-158	STANDARD SHEETS A-1, B-1, C-1, D-1, D-6, D-11, E-4, 1, 2, 3, 4, 5, 6, 7, 8, 9, 10, 11, 12, 13, 14, 15, 16, 17, 18, 19, 20, 21, 22, 23, 24, 25, 26, 27, 28, 29, 30, 31, 32, 33, 34, 35, 36, 37, 38, 39, 40, 41, 42, 43, 44, 45, 46, 47, 48, 49, 50, 51, 52, 53, 54, 55, 56, 57, 58, 59, 60, 61, 62, 63, 64, 65, 66, 67, 68, 69, 70, 71, 72, 73, 74, 75, 76, 77, 78, 79, 80, 81, 82, 83, 84, 85, 86, 87, 88, 89, 90, 91, 92, 93, 94, 95, 96, 97, 98, 99, 100

PREPARED AND RECOMMENDED
GROGAN & O'DEA, INC.
CONSULTING ENGINEERS

DATE Oct. 1967
TITLE MILFORD BY-PASS
PROJECT NO. 67-08-008
LICENSE NO. 1000

U. S. DEPARTMENT OF TRANSPORTATION
BUREAU OF PUBLIC ROADS

APPROVED _____ 19__
DIRECTOR OF OPERATIONS

DELAWARE STATE HIGHWAY DEPARTMENT

RECOMMENDED 1/27 1970 John S. Robinson
RECOMMENDED 1/28 1970 John S. Robinson
RECOMMENDED 1/28 1970 John S. Robinson

SCALES

TITLE SHEET	1" = 1000 FEET
CONSTRUCTION PLAN	1" = 50 FEET
HORIZONTAL PROFILE	1" = 50 FEET
VERTICAL PROFILE	1" = 5 FEET

CONVENTIONAL SIGNS

PROPOSED CENTER LINE	WOODED AREA
EXISTING RIGHT OF WAY LINE	TELEPHONE OR UTILITY POLE
CONTROLLED ACCESS LINE	EXISTING CULVERT OR PIPE
NEW P.A. CONTROLLED ACCESS LINE	PROPOSED LINE/PIPE
CONSTRUCTION EASEMENT (PERM)	ENCE (WIRE/WOOD) ENDS
CONTRACT LINE (BASEMENT ITEM)	SHORE OF STREAM LINE
THE 0' OF SLOPE	INT. FOR ADDITIONAL SIGNS SEE INITIAL SHEET OF EACH CONTRACT
TOP OF SLOPE OR DITCH	

COUNTY	CONTRACT	PLAN NO.	SHEET NO.	TOTAL SHEETS
SUSSEX	67-08-008	2	DEL F-86(3)	70

**MILFORD BY-PASS
RAMP 'A' OVER MILFORD BY-PASS
BRIDGE NO. 1**

QUANTITIES

NO.	ITEM	UNIT	QUANTITY
4	EXCAVATION FOR STRUCTURE	C.Y.	180
7	SELECT BORON	C.Y.	1,840
11	HOT MIX. HOT LAD ASPHALTIC CONCRETE PAVEMENT	TONS	95
*18	PORTLAND CEMENT CONCRETE MASONRY - ABUTMENTS	C.Y.	744
*18	PORTLAND CEMENT CONCRETE MASONRY - PIER FOOTINGS	C.Y.	58
*18	PORTLAND CEMENT CONCRETE MASONRY - SUPERSTRAUTMENT PILES	C.Y.	270
*18	PORTLAND CEMENT CONCRETE MASONRY - APPROACH SLAB	C.Y.	123
*18	PORTLAND CEMENT CONCRETE MASONRY - SUBFOUNDATION	C.Y.	181,000
*20	BAR REINFORCEMENT - BRIDGES	LBS.	181,000
22	STRUCTURAL STEEL (APPROXIMATELY 50,000 LBS.)	L.S.	1.5
25	CAST-IN-PLACE CONCRETE PILES UNDERMINING	C.Y.	7,400
35	STEEL SHELL TEST PILES 12" x 12"	L.F.	185
35	STEEL SHELL TEST PILES 18" x 18"	L.F.	303
35	STEEL SHELL TEST PILES 24" x 24"	L.F.	185
35	STEEL SHELL TEST PILES 30" x 30"	L.F.	303
35	STEEL SHELL TEST PILES 36" x 36"	L.F.	185
35	STEEL SHELL TEST PILES 42" x 42"	L.F.	303
35	STEEL SHELL TEST PILES 48" x 48"	L.F.	185
35	STEEL SHELL TEST PILES 54" x 54"	L.F.	303
35	STEEL SHELL TEST PILES 60" x 60"	L.F.	185
35	STEEL SHELL TEST PILES 66" x 66"	L.F.	303
35	STEEL SHELL TEST PILES 72" x 72"	L.F.	185
35	STEEL SHELL TEST PILES 78" x 78"	L.F.	303
35	STEEL SHELL TEST PILES 84" x 84"	L.F.	185
35	STEEL SHELL TEST PILES 90" x 90"	L.F.	303
35	STEEL SHELL TEST PILES 96" x 96"	L.F.	185
35	STEEL SHELL TEST PILES 102" x 102"	L.F.	303
35	STEEL SHELL TEST PILES 108" x 108"	L.F.	185
35	STEEL SHELL TEST PILES 114" x 114"	L.F.	303
35	STEEL SHELL TEST PILES 120" x 120"	L.F.	185
35	STEEL SHELL TEST PILES 126" x 126"	L.F.	303
35	STEEL SHELL TEST PILES 132" x 132"	L.F.	185
35	STEEL SHELL TEST PILES 138" x 138"	L.F.	303
35	STEEL SHELL TEST PILES 144" x 144"	L.F.	185
35	STEEL SHELL TEST PILES 150" x 150"	L.F.	303
35	STEEL SHELL TEST PILES 156" x 156"	L.F.	185
35	STEEL SHELL TEST PILES 162" x 162"	L.F.	303
35	STEEL SHELL TEST PILES 168" x 168"	L.F.	185
35	STEEL SHELL TEST PILES 174" x 174"	L.F.	303
35	STEEL SHELL TEST PILES 180" x 180"	L.F.	185
35	STEEL SHELL TEST PILES 186" x 186"	L.F.	303
35	STEEL SHELL TEST PILES 192" x 192"	L.F.	185
35	STEEL SHELL TEST PILES 198" x 198"	L.F.	303
35	STEEL SHELL TEST PILES 204" x 204"	L.F.	185
35	STEEL SHELL TEST PILES 210" x 210"	L.F.	303
35	STEEL SHELL TEST PILES 216" x 216"	L.F.	185
35	STEEL SHELL TEST PILES 222" x 222"	L.F.	303
35	STEEL SHELL TEST PILES 228" x 228"	L.F.	185
35	STEEL SHELL TEST PILES 234" x 234"	L.F.	303
35	STEEL SHELL TEST PILES 240" x 240"	L.F.	185
35	STEEL SHELL TEST PILES 246" x 246"	L.F.	303
35	STEEL SHELL TEST PILES 252" x 252"	L.F.	185
35	STEEL SHELL TEST PILES 258" x 258"	L.F.	303
35	STEEL SHELL TEST PILES 264" x 264"	L.F.	185
35	STEEL SHELL TEST PILES 270" x 270"	L.F.	303
35	STEEL SHELL TEST PILES 276" x 276"	L.F.	185
35	STEEL SHELL TEST PILES 282" x 282"	L.F.	303
35	STEEL SHELL TEST PILES 288" x 288"	L.F.	185
35	STEEL SHELL TEST PILES 294" x 294"	L.F.	303
35	STEEL SHELL TEST PILES 300" x 300"	L.F.	185
35	STEEL SHELL TEST PILES 306" x 306"	L.F.	303
35	STEEL SHELL TEST PILES 312" x 312"	L.F.	185
35	STEEL SHELL TEST PILES 318" x 318"	L.F.	303
35	STEEL SHELL TEST PILES 324" x 324"	L.F.	185
35	STEEL SHELL TEST PILES 330" x 330"	L.F.	303
35	STEEL SHELL TEST PILES 336" x 336"	L.F.	185
35	STEEL SHELL TEST PILES 342" x 342"	L.F.	303
35	STEEL SHELL TEST PILES 348" x 348"	L.F.	185
35	STEEL SHELL TEST PILES 354" x 354"	L.F.	303
35	STEEL SHELL TEST PILES 360" x 360"	L.F.	185
35	STEEL SHELL TEST PILES 366" x 366"	L.F.	303
35	STEEL SHELL TEST PILES 372" x 372"	L.F.	185
35	STEEL SHELL TEST PILES 378" x 378"	L.F.	303
35	STEEL SHELL TEST PILES 384" x 384"	L.F.	185
35	STEEL SHELL TEST PILES 390" x 390"	L.F.	303
35	STEEL SHELL TEST PILES 396" x 396"	L.F.	185
35	STEEL SHELL TEST PILES 402" x 402"	L.F.	303
35	STEEL SHELL TEST PILES 408" x 408"	L.F.	185
35	STEEL SHELL TEST PILES 414" x 414"	L.F.	303
35	STEEL SHELL TEST PILES 420" x 420"	L.F.	185
35	STEEL SHELL TEST PILES 426" x 426"	L.F.	303
35	STEEL SHELL TEST PILES 432" x 432"	L.F.	185
35	STEEL SHELL TEST PILES 438" x 438"	L.F.	303
35	STEEL SHELL TEST PILES 444" x 444"	L.F.	185
35	STEEL SHELL TEST PILES 450" x 450"	L.F.	303
35	STEEL SHELL TEST PILES 456" x 456"	L.F.	185
35	STEEL SHELL TEST PILES 462" x 462"	L.F.	303
35	STEEL SHELL TEST PILES 468" x 468"	L.F.	185
35	STEEL SHELL TEST PILES 474" x 474"	L.F.	303
35	STEEL SHELL TEST PILES 480" x 480"	L.F.	185
35	STEEL SHELL TEST PILES 486" x 486"	L.F.	303
35	STEEL SHELL TEST PILES 492" x 492"	L.F.	185
35	STEEL SHELL TEST PILES 498" x 498"	L.F.	303
35	STEEL SHELL TEST PILES 504" x 504"	L.F.	185
35	STEEL SHELL TEST PILES 510" x 510"	L.F.	303
35	STEEL SHELL TEST PILES 516" x 516"	L.F.	185
35	STEEL SHELL TEST PILES 522" x 522"	L.F.	303
35	STEEL SHELL TEST PILES 528" x 528"	L.F.	185
35	STEEL SHELL TEST PILES 534" x 534"	L.F.	303
35	STEEL SHELL TEST PILES 540" x 540"	L.F.	185
35	STEEL SHELL TEST PILES 546" x 546"	L.F.	303
35	STEEL SHELL TEST PILES 552" x 552"	L.F.	185
35	STEEL SHELL TEST PILES 558" x 558"	L.F.	303
35	STEEL SHELL TEST PILES 564" x 564"	L.F.	185
35	STEEL SHELL TEST PILES 570" x 570"	L.F.	303
35	STEEL SHELL TEST PILES 576" x 576"	L.F.	185
35	STEEL SHELL TEST PILES 582" x 582"	L.F.	303
35	STEEL SHELL TEST PILES 588" x 588"	L.F.	185
35	STEEL SHELL TEST PILES 594" x 594"	L.F.	303
35	STEEL SHELL TEST PILES 600" x 600"	L.F.	185
35	STEEL SHELL TEST PILES 606" x 606"	L.F.	303
35	STEEL SHELL TEST PILES 612" x 612"	L.F.	185
35	STEEL SHELL TEST PILES 618" x 618"	L.F.	303
35	STEEL SHELL TEST PILES 624" x 624"	L.F.	185
35	STEEL SHELL TEST PILES 630" x 630"	L.F.	303
35	STEEL SHELL TEST PILES 636" x 636"	L.F.	185
35	STEEL SHELL TEST PILES 642" x 642"	L.F.	303
35	STEEL SHELL TEST PILES 648" x 648"	L.F.	185
35	STEEL SHELL TEST PILES 654" x 654"	L.F.	303
35	STEEL SHELL TEST PILES 660" x 660"	L.F.	185
35	STEEL SHELL TEST PILES 666" x 666"	L.F.	303
35	STEEL SHELL TEST PILES 672" x 672"	L.F.	185
35	STEEL SHELL TEST PILES 678" x 678"	L.F.	303
35	STEEL SHELL TEST PILES 684" x 684"	L.F.	185
35	STEEL SHELL TEST PILES 690" x 690"	L.F.	303
35	STEEL SHELL TEST PILES 696" x 696"	L.F.	185
35	STEEL SHELL TEST PILES 702" x 702"	L.F.	303
35	STEEL SHELL TEST PILES 708" x 708"	L.F.	185
35	STEEL SHELL TEST PILES 714" x 714"	L.F.	303
35	STEEL SHELL TEST PILES 720" x 720"	L.F.	185
35	STEEL SHELL TEST PILES 726" x 726"	L.F.	303
35	STEEL SHELL TEST PILES 732" x 732"	L.F.	185
35	STEEL SHELL TEST PILES 738" x 738"	L.F.	303
35	STEEL SHELL TEST PILES 744" x 744"	L.F.	185
35	STEEL SHELL TEST PILES 750" x 750"	L.F.	303
35	STEEL SHELL TEST PILES 756" x 756"	L.F.	185
35	STEEL SHELL TEST PILES 762" x 762"	L.F.	303
35	STEEL SHELL TEST PILES 768" x 768"	L.F.	185
35	STEEL SHELL TEST PILES 774" x 774"	L.F.	303
35	STEEL SHELL TEST PILES 780" x 780"	L.F.	185
35	STEEL SHELL TEST PILES 786" x 786"	L.F.	303
35	STEEL SHELL TEST PILES 792" x 792"	L.F.	185
35	STEEL SHELL TEST PILES 798" x 798"	L.F.	303
35	STEEL SHELL TEST PILES 804" x 804"	L.F.	185
35	STEEL SHELL TEST PILES 810" x 810"	L.F.	303
35	STEEL SHELL TEST PILES 816" x 816"	L.F.	185
35	STEEL SHELL TEST PILES 822" x 822"	L.F.	303
35	STEEL SHELL TEST PILES 828" x 828"	L.F.	185
35	STEEL SHELL TEST PILES 834" x 834"	L.F.	303
35	STEEL SHELL TEST PILES 840" x 840"	L.F.	185
35	STEEL SHELL TEST PILES 846" x 846"	L.F.	303
35	STEEL SHELL TEST PILES 852" x 852"	L.F.	185
35	STEEL SHELL TEST PILES 858" x 858"	L.F.	303
35	STEEL SHELL TEST PILES 864" x 864"	L.F.	185
35	STEEL SHELL TEST PILES 870" x 870"	L.F.	303
35	STEEL SHELL TEST PILES 876" x 876"	L.F.	185
35	STEEL SHELL TEST PILES 882" x 882"	L.F.	303
35	STEEL SHELL TEST PILES 888" x 888"	L.F.	185
35	STEEL SHELL TEST PILES 894" x 894"	L.F.	303
35	STEEL SHELL TEST PILES 900" x 900"	L.F.	185
35	STEEL SHELL TEST PILES 906" x 906"	L.F.	303
35	STEEL SHELL TEST PILES 912" x 912"	L.F.	185
35	STEEL SHELL TEST PILES 918" x 918"	L.F.	303
35	STEEL SHELL TEST PILES 924" x 924"	L.F.	185
35	STEEL SHELL TEST PILES 930" x 930"	L.F.	303
35	STEEL SHELL TEST PILES 936" x 936"	L.F.	185
35	STEEL SHELL TEST PILES 942" x 942"	L.F.	303
35	STEEL SHELL TEST PILES 948" x 948"	L.F.	185
35	STEEL SHELL TEST PILES 954" x 954"	L.F.	303
35	STEEL SHELL TEST PILES 960" x 960"	L.F.	185
35	STEEL SHELL TEST PILES 966" x 966"	L.F.	303
35	STEEL SHELL TEST PILES 972" x 972"	L.F.	185
35	STEEL SHELL TEST PILES 978" x 978"	L.F.	303
35	STEEL SHELL TEST PILES 984" x 984"	L.F.	185
35	STEEL SHELL TEST PILES 990" x 990"	L.F.	303
35	STEEL SHELL TEST PILES 996" x 996"	L.F.	185
35	STEEL SHELL TEST PILES 1002" x 1002"	L.F.	303

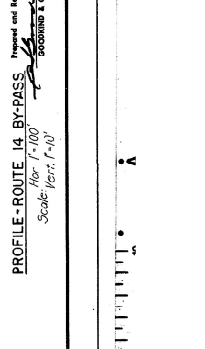
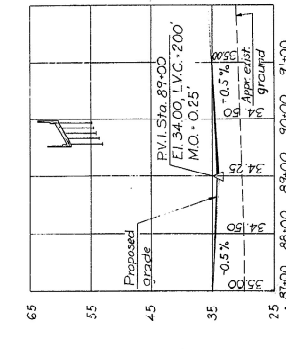
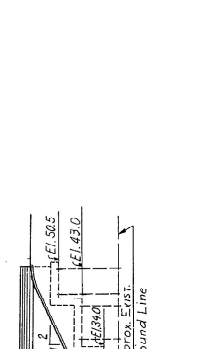
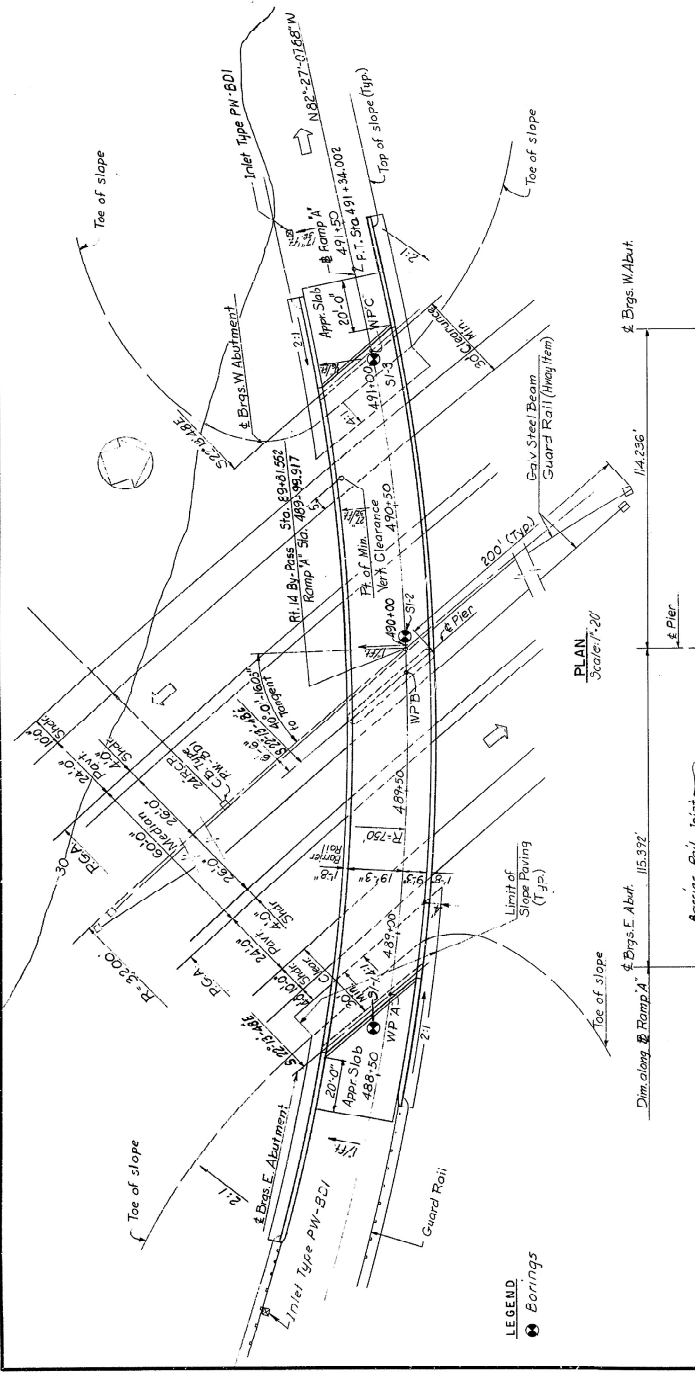
NOTE: ITEMS INDICATED * ARE PLATED QUANTITY ITEMS - SEE SPECIAL PROVISIONS

INDEX OF DRAWINGS

DRAWING NO.	TITLE
1	GENERAL PLAN
2	EAST ABUTMENT
3	EAST ABUTMENT - WINGWALLS
4	WEST ABUTMENT
5	WEST ABUTMENT - WINGWALLS
6	PIER AND SECTION
7	PIER AND SUBSTRUCTURE DETAILS
8	PIER
9	PIER AND PLATE GIRDER DETAILS
10	STEEL DETAILS
11	DECK PLAN
12	BAR LIST
13	BAR LIST
14	BAR LIST
15	STRUCTURAL BORINGS

GENERAL NOTES

- DESIGN SPECIFICATIONS: AASHTO 1965 AND AASHTO INTERIM SPECIFICATIONS 1964-1967.
- LOADING: AS 20-44
- DESIGN MINIMUM VERTICAL CLEARANCE 15'-0"
- MATERIAL AND FABRICATION: STATE OF DELAWARE, STATE HIGHWAY DEPARTMENT STANDARD SPECIFICATIONS, JULY 1, 1965, AND SPECIAL PROVISIONS.
- DESIGN: STRUCTURAL STEEL A.S.T.M. A36 AND AS NOTED
CONCRETE: 3000 P.S.I. W = 10
C = 1500 P.S.I.
TEMPERATURE IMMEDIATE SUPPORTS FOR COMPOSITE CONSTRUCT ON SHALL NOT BE USED.
ALL EXPOSED EDGES OF CONCRETE TO BE CHAMFERED 3/4" UNLESS SHOWN OTHERWISE.
- FOUNDATIONS: ABUTMENTS AND PIERS SUPPORTED BY CAST-IN-PLACE CONCRETE PILES, DES ON CAPACITY 35 TONS MINIMUM. AT ABUTMENTS PLACE FILL AS NEAR AS POSSIBLE TO PLANNED FOOTING GRADE PRIOR TO DRIVING PILES. PILES ADJACENT TO STEEP HILLS SHALL BE OBTAIN PRIOR TO POURING WALL.



**DELAWARE
STATE HIGHWAY DEPARTMENT**

GENERAL PLAN

APPROVED BY: *[Signature]*
BRIDGE ENGINEER

DATE: *[Date]*

SCALE: *[Scale]*

CONSULTING ENGINEERS:
COOKHINE & O'NEAL, INC.

DCT 1959

Scale: Vert. 1"=10'

Scale: Hor. 1"=100'

Scale: Hor. 1"=100'

Scale: 1"=20'

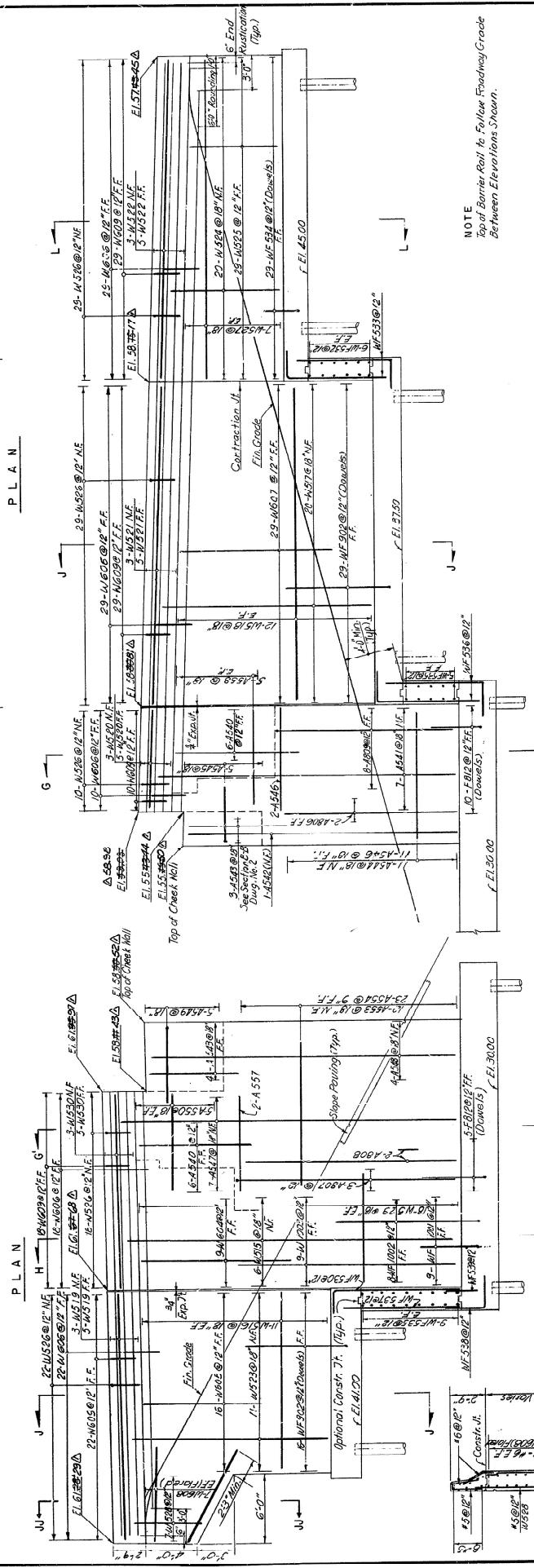
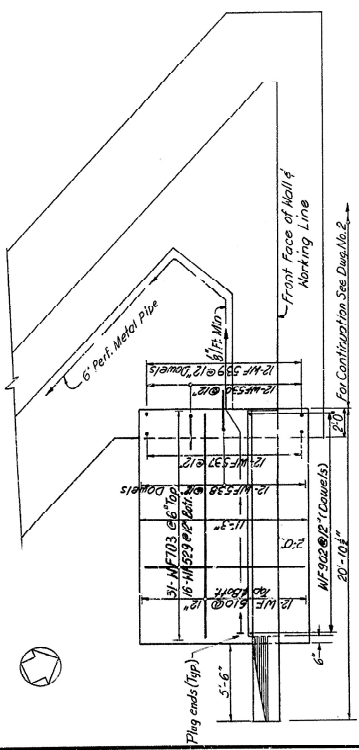
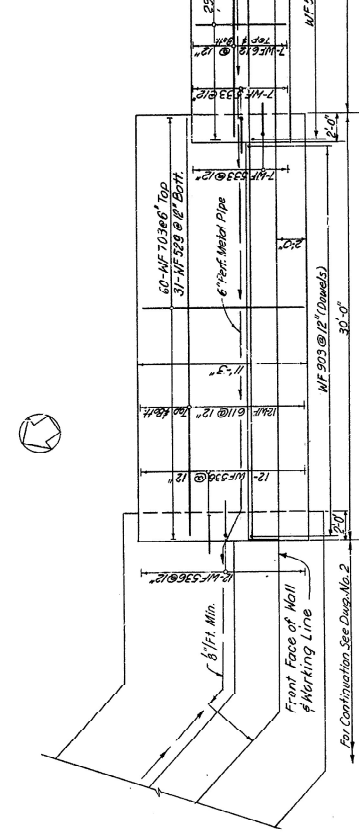
Scale: 1"=20'

Scale: 1"=2000'

Checked by: *[Signature]*
Designed by: *[Signature]*
Revised by: *[Signature]*
Plot Checked by: *[Signature]*

KEY PLAN	CONTRACT	NO. & DATE	REV.	DATE	BY
6	167-08-008	2	DEL	F-196(3)	72
SUSSEX					

MILFORD BY-PASS
RAMP 'X' OVER MILFORD BY-PASS
BRIDGE NO.1



DELAWARE DEPARTMENT STATE HIGHWAY DEPARTMENT	
EAST ABUTMENT - WINGWALLS	
APPROVED BY:	DATE
NO.	DATE
3	4-1-60
GODDARD & ODELL, INC. CONSULTING ENGINEERS	

NOTE
Top of Barricade Rail to Follow Roadway Grade
Between Elevations Shown.

ELEVATION
S. E. WINGWALL

REFERENCES
1 For General Notes See Drawg. No. 1
2 For Plan and Elevation of Abutment See Drawg. No. 2
3 For Pile Layout and Sections See Drawg. No. 3
4 For Additional References See Drawg. No. 4
5 For Bar List See Drawg. No. 12
6 For Slope Paving Details See Drawg. No. 7
7 For Contraction Joint and Expansion Joint Details See Drawg. No. 8
8 For Barricade Rail Details See Drawg. No. 11

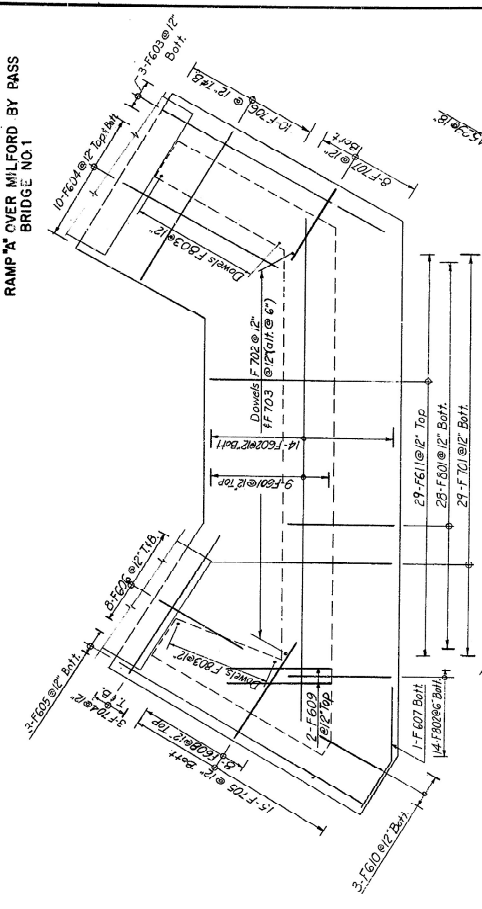
ELEVATION
N. E. WINGWALL

SECTION J-J
(For Details Not Shown)
See Section J-J

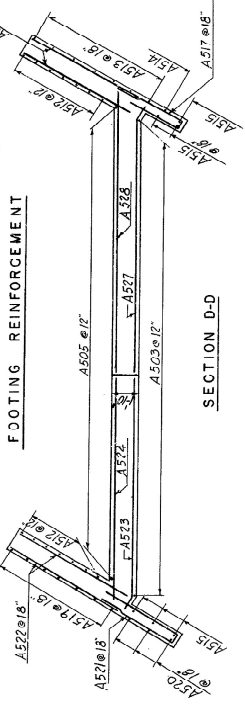
In Charge: E. S. 51171
Designed by: J. H. 1111
Checked by: C. W. 1111
Detail Checked by: M. S. 1111

COUNTY	CONTRACT	DATE	REVISED	DATE
DELAWARE	1-13-63	2	DEL	1-13-63
NO. 1	NO. 2	NO. 3	NO. 4	NO. 5
1	2	3	4	5

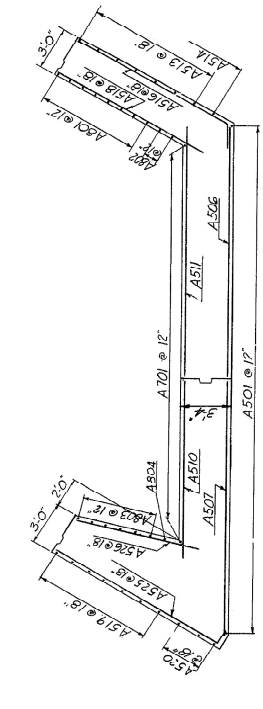
MILFORD BY-PASS
RAMP "A" OVER MILFORD BY PASS
BRIDGE NO. 1



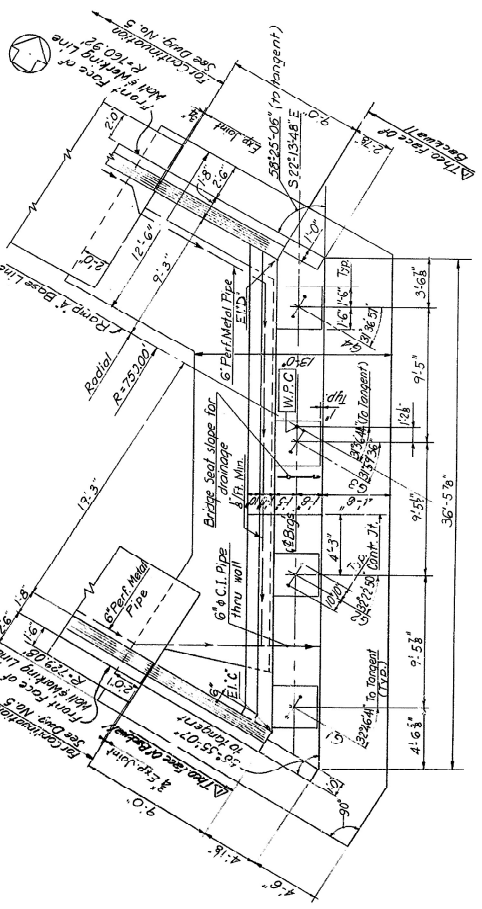
FOOTING REINFORCEMENT



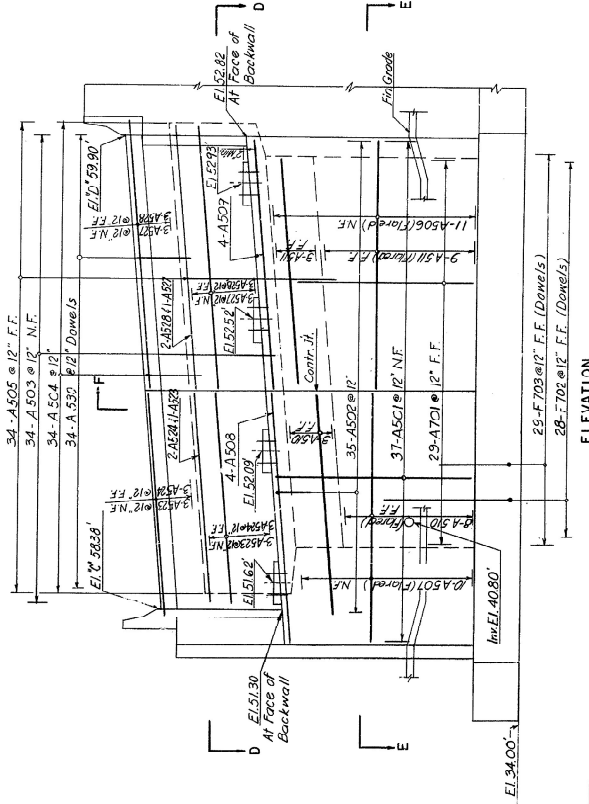
SECTION D-D



SECTION E-E



PLAN



ELEVATION

- REFERENCES
1. For General Notes See Supp. No. 1
 2. For Other References See Supp. No. 2
 3. For Detail of Expansion Joint at Abutment See Supp. No. 10

In Charge of
Designed by
Checked by
Detail Checked by

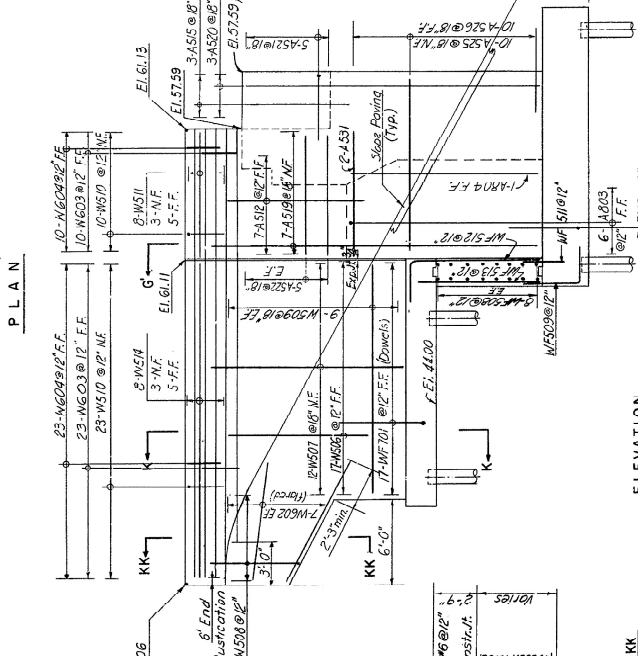
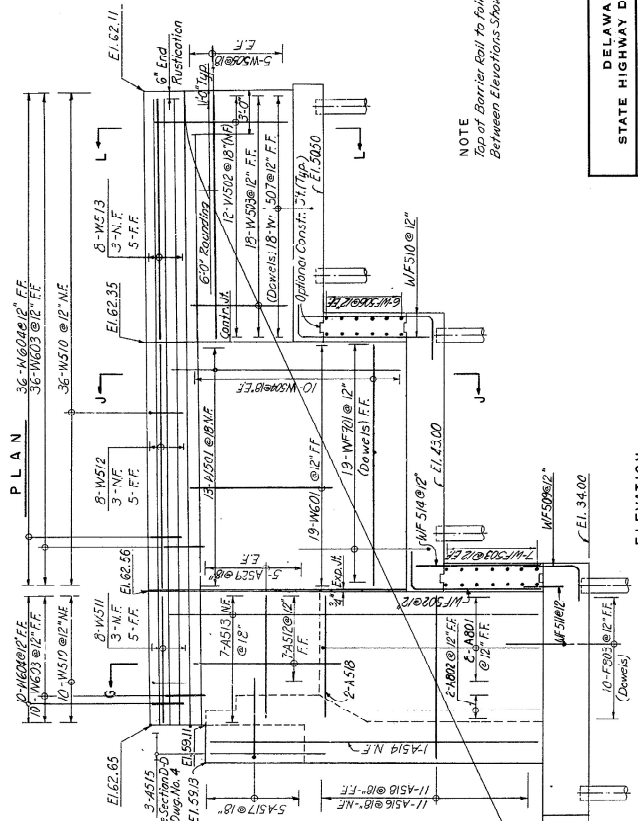
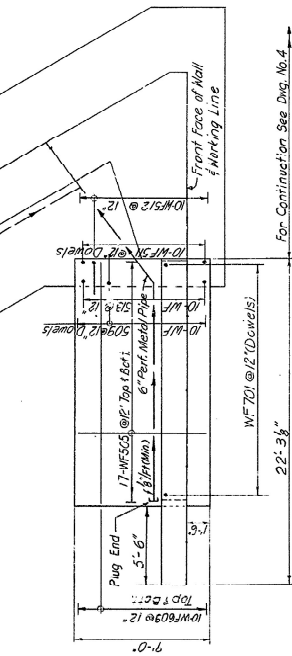
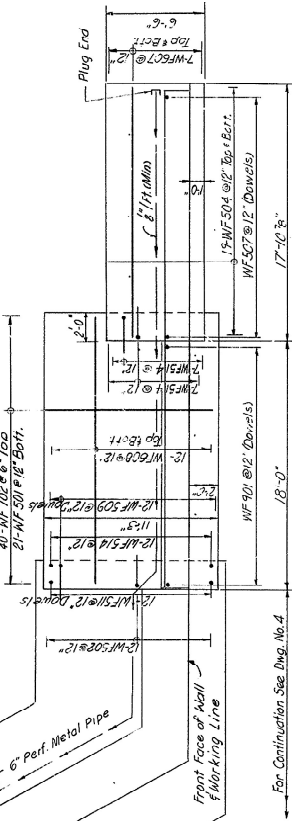
APPROVED BY:
DATE
SCALE
DME
NO. 4
1/4" = 1'-0"

DELAWARE
STATE HIGHWAY DEPARTMENT
WEST ABUTMENT

GOODRICH & ODEA, INC.
CONSULTING ENGINEERS

COUNTY	CONTRACT	SHEET NO.	TOTAL SHEETS
SUSSEX	2	74	74

MILFORD BY-PASS
RAMP "A" OVER MILFORD BY-PASS
BRIDGE NO. 1



NOTE
Top of Barrier Rail to follow Roadway Grade
Between Elevations Shown.

APPROVED BY	DATE
<i>[Signature]</i>	OCT 1989
SCALE	DATE
4" = 1'-0"	
DWG. NO.	CONSULTING ENGINEERS
5	GOODRIND & O'NEAL, INC.

DELAWARE	STATE HIGHWAY DEPARTMENT
WEST ABUTMENT - WINGWALLS	

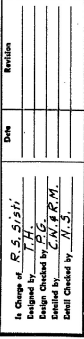
N. W. WINGWALL

S. W. WINGWALL

- REFERENCES
- 1 For General Notes See Dwg. No. 1
 - 2 For Plan and Elevation of Abutment See Dwg. No. 4
 - 3 For Pile Layout and Sections See Dwg. No. 6
 - 4 For Additional References See Dwg. No. 2
 - 5 For Bar List See Dwg. No. 13
 - 6 For Slope Paving Details See Dwg. No. 7
 - 7 For Contraction Joint and Expansion Joint Details See Dwg. No. 8

IN CHARGE OF	DATE
R. J. Sisti	
DESIGNED BY	REVISION
C. M. R. M.	
CHECKED BY	
N. J.	

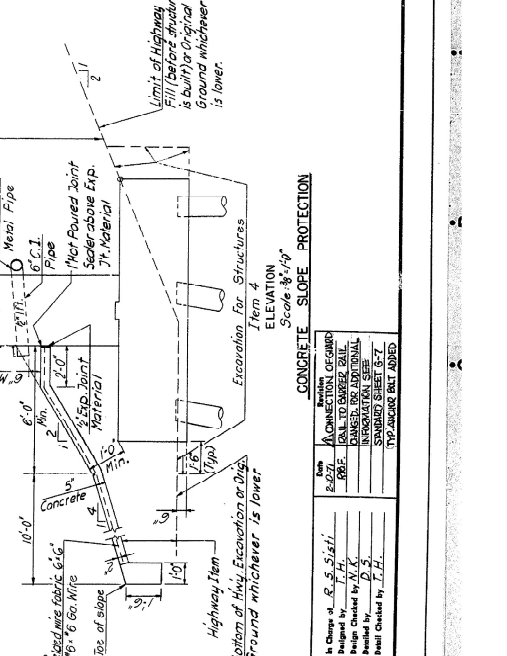
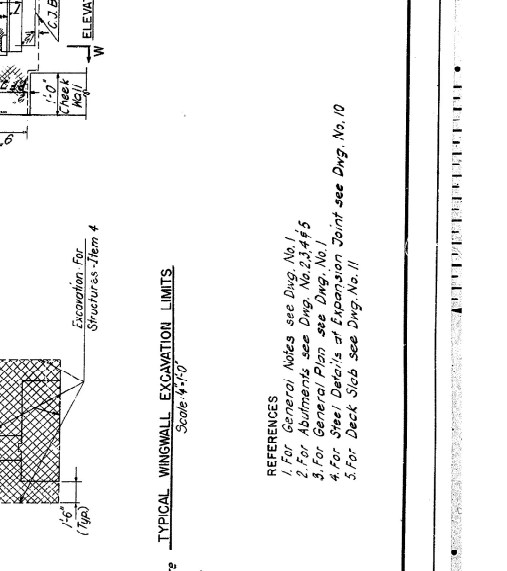
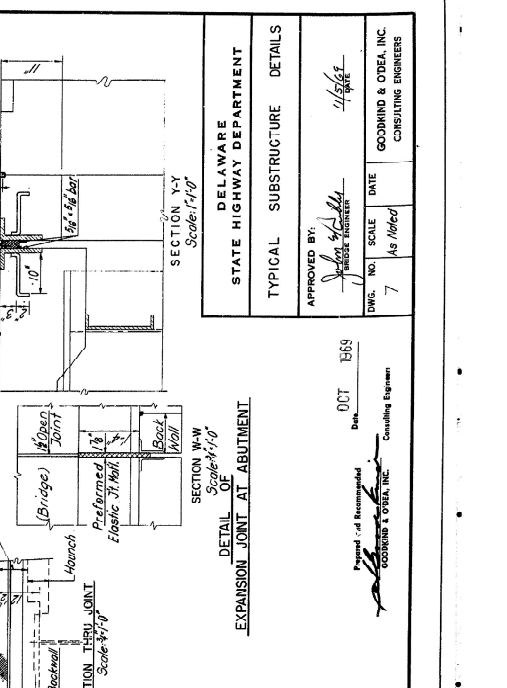
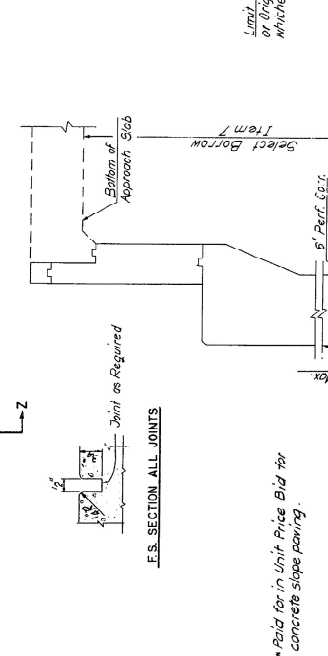
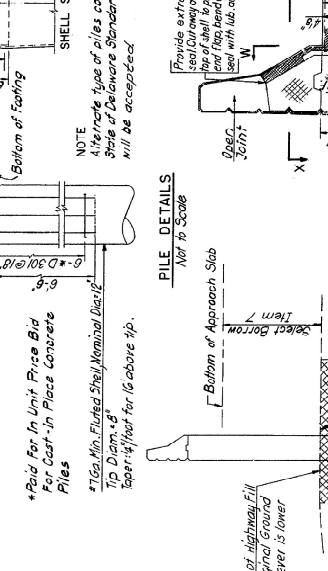
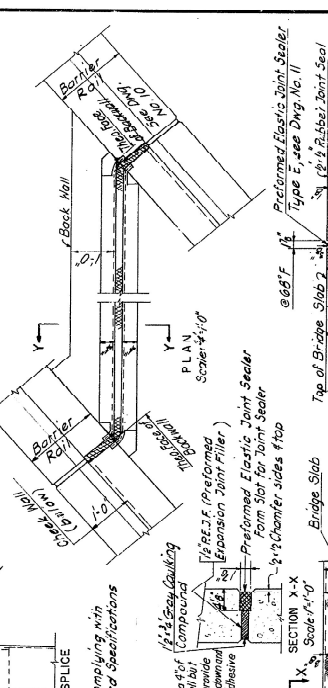
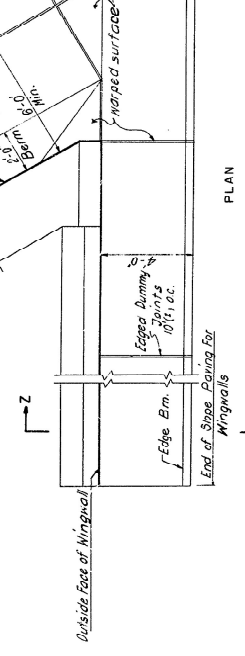
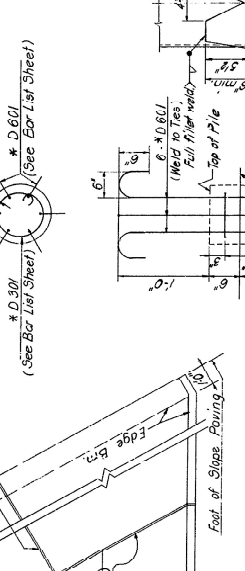
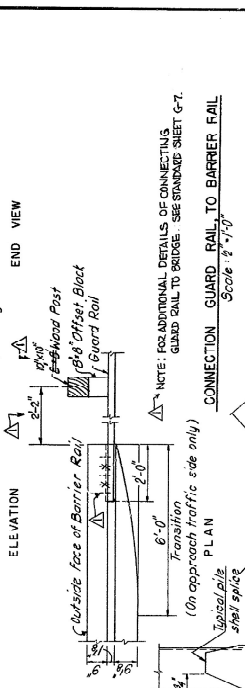
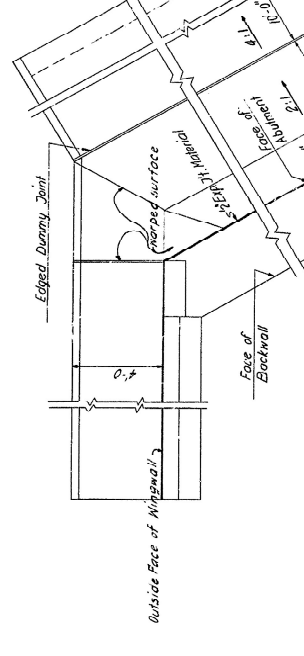
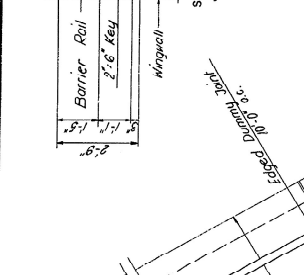
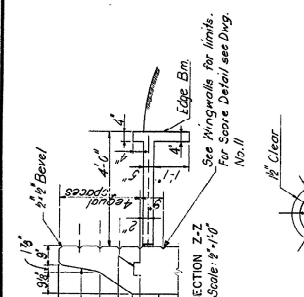
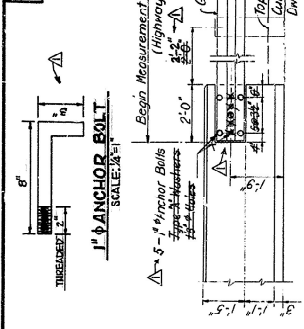
SECTION KK-KK
(For Details Not Shown
See Section K-K)



Printed and Recommended
GOODRIND & O'NEAL, INC.
Consulting Engineers

COUNTY	CONTRACT	DATE	REV.	DATE
DELR.	87-08-008	2	DEL.	1-19-63
U.S.S.E.T.				76

**MILFORD BY-PASS
RAMP "A" OVER MILFORD BY-PASS
BRIDGE NO. 1**



DELAWARE STATE HIGHWAY DEPARTMENT
TYPICAL SUBSTRUCTURE DETAILS
APPROVED BY: [Signature]
DWG. NO. 7
DATE: As Noted
GODWIN & ODEA, INC. CONSULTING ENGINEERS

DATE: OCT 1963

Prepared & Recommended by: [Signature]

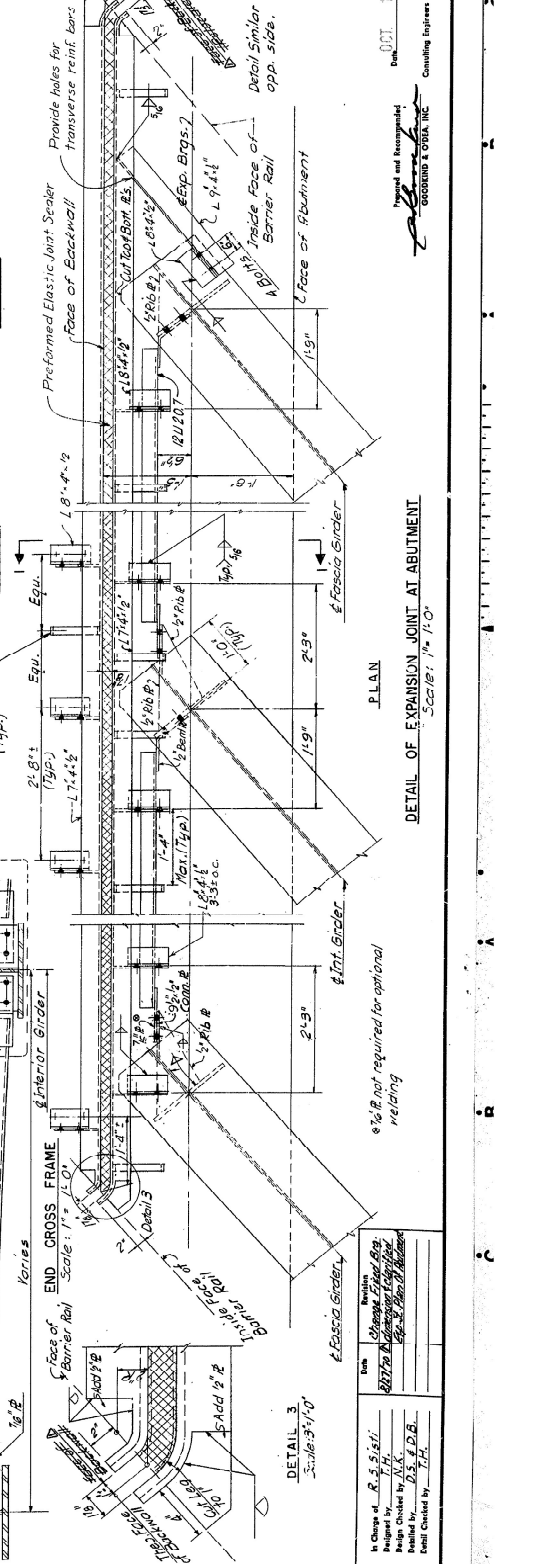
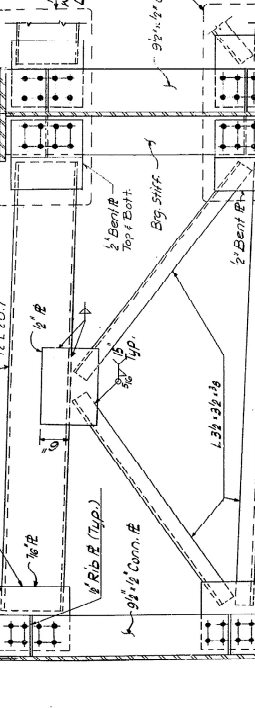
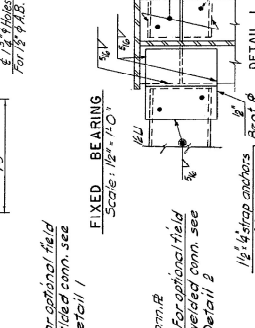
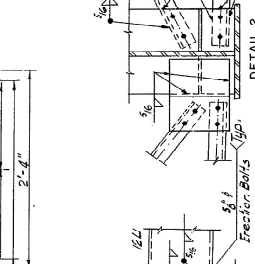
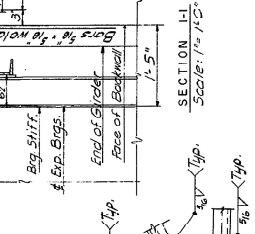
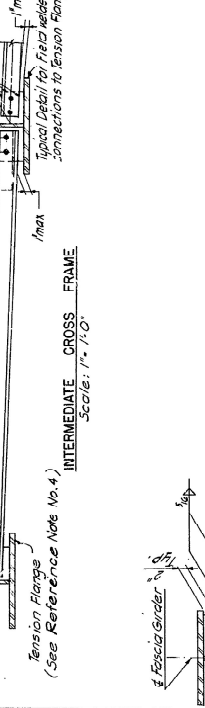
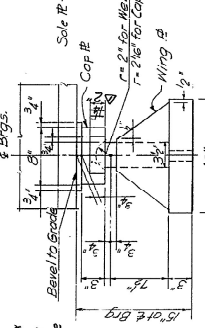
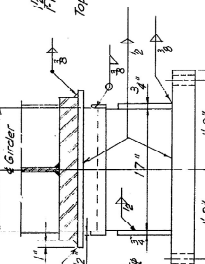
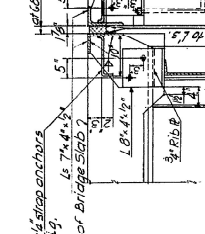
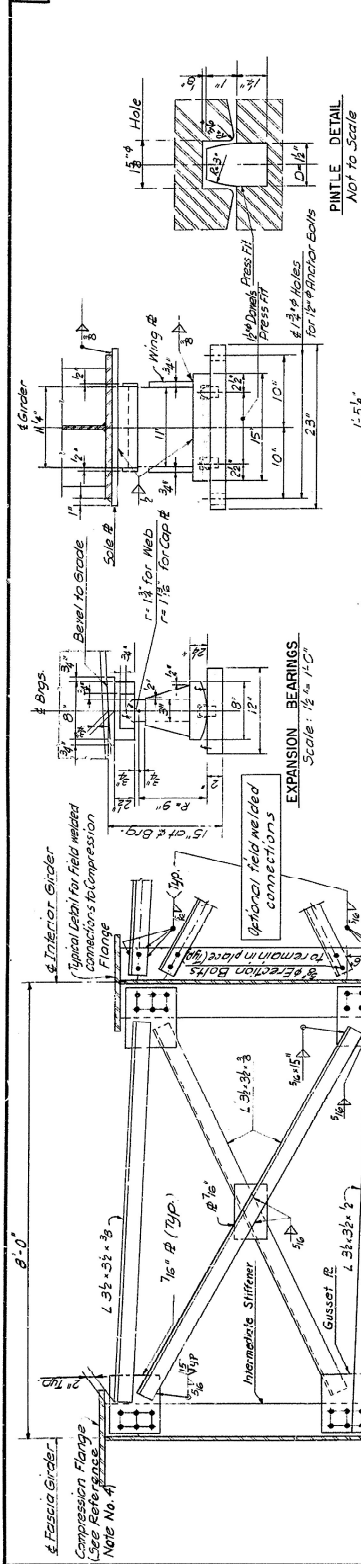
Consulting Engineer: GODWIN & ODEA, INC.

- REFERENCES**
1. For General Notes see Dwg. No. 1.
 2. For Abutments see Dwg. No. 2, 3, 4 & 5.
 3. For General Plans see Dwg. No. 1.
 4. For Steel Details of Expansion Joint see Dwg. No. 10.
 5. For Deck Slab see Dwg. No. 11.

DESIGNED BY: [Signature]	SCALE: 1/4"=1'-0"
CHECKED BY: [Signature]	DATE: 1/19/63
APPROVED BY: [Signature]	DATE: As Noted
DWG. NO. 7	DATE: As Noted
GODWIN & ODEA, INC.	CONSULTING ENGINEERS

COUNTY	CONTRACT	SHEET	DATE	REVISIONS	DATE	BY
KENT SUSSEX	ST-08-008	2	DEL	F-56(3)	79	12

**MILFORD BY-PASS
RAMP 'X' OVER MILFORD BY-PASS
BRIDGE NO. 1**



- NOTES**
- All field welding to be done before bridge slab is poured.
 - For details not shown on Detail 1 and 2 see End Cross Frame.
 - Provide adjustable temporary connection between Exp. 2 and 3. See Special Provisions.
- REFERENCES**
- For Cross Frame location see Dwg. No. 3
 - For Notes see Dwg. No. 1/8
 - For detail of Preformed Elastic Joint Sealer Type E see Dwg. No. 11
 - For location of Tension and Compression Flanges see Dwg. No. 9
 - For Framing Plan and Slender Details see Dwg. No. 9
 - For concrete Details of Expansion Joint see Dwg. No. 7

APPROVED BY	DATE	SCALE
<i>[Signature]</i>	OCT. 1959	1/4" = 1'-0"

STATE HIGHWAY DEPARTMENT
STEEL DETAIL - S

Prepared and Drawn by:
ROCKKIND & O'DEA, INC.
Consulting Engineers

In Charge of: **R. S. Sisti**
Designed by: **T. H. D.B.**
Detail Checked by: **T.H.**

1/4" B not required for optional welding

DETAIL 3
Scale: 3/4" = 1'-0"

